

FOLLOWING DIMENSIONS FOR ALL MATERIALS,
NON-MACHINEABLE AND MACHINEABLE

*NOTE	MIN	MAX
A NONMAGNETIC	0.040"	0.625"
B MAGNETIC**	0.040"	0.250"

** THICKNESS OF A MAGNETIC TARGET DEPENDS
ON THE PERMEABILITY OF THE MATERIAL

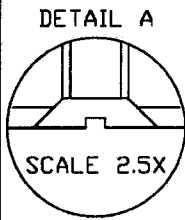
REV	DATE	DESCRIPTION OF CHANGE
G	7-1-1999	REDRAWN
F	11-1-98	R13 / US INC BLOCK
E	12-8-95	BLOCK CHANGE
D	N/A	ADDITIONAL MATERIAL
C	3-11-94	THICKNESS SPECS
B	8-11-93	REDRAWN
A	N/A	PRODUCTION RELEASE

MATERIAL: SEE NOTES
 FINISH: SEE NOTES
 CNC FILE: N/A
 ACAD FILE: L300-01
 THE INFORMATION ON THIS DRAWING IS PROPRIETARY
 AND MAY NOT BE USED, COMMUNICATED, OR REPRODUCED WITHOUT WRITTEN PERMISSION

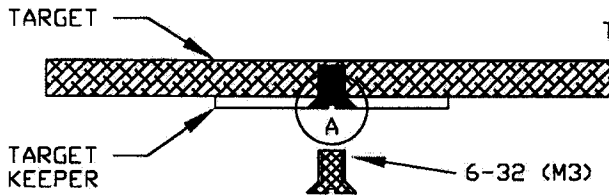
US INCORPORATED			
3" MAK TARGET			
SIZE A	TOLERANCES UNLESS NOTED XX ±0.01 XXX ±0.005 ANGLES ±0.5° MAX BREAK EDGE 0.01	DRAWING NUMBER L300-01	REV G
SCALE: FULL	DWN BY: NWN	DATE: 7-1-1999	SHEET: 1 OF 1

3" MIGHTY MAK TARGET MOUNTING OPTIONS

TARGET ATTACHED TO TARGET KEEPER WITH SCREW



COUNTERSINK
TARGET AND
KEEPER SO
SCREW HEAD
FITS FLUSH
(STD TAP PROC)

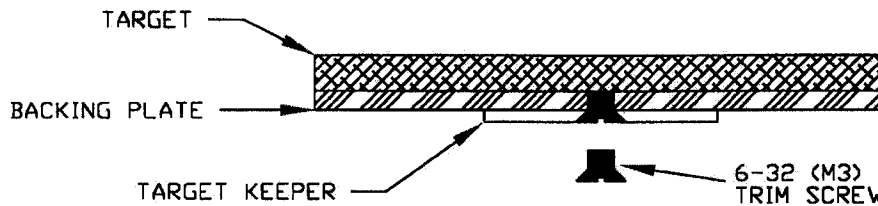


TAPPING INFORMATION FOR TARGETS
0.080" OR LESS TAP THRU
0.100" OR GREATER TAP 90%

6-32 (M3) VENTED FLAT HEAD SCREW

NOTE: SEE DWG# L300-02 TARGET KEEPER FOR SPECIFICATIONS

TARGET BONDED TO BACKING PLATE WITH ATTACHED KEEPER



6-32 (M3) VENTED FLAT HEAD SCREW
TRIM SCREW - FLUSH WITH BACKING PLATE

BOND TARGET TO BACKING PLATE CONCENTRIC TO ± 0.005
BOND MUST WITHSTAND 220° C MAXIMUM TEMPERATURE

NOTE: SEE DWG# L300-BP BACKING PLATE SPECIFICATIONS

H	11-18-99	REMOVED BOND INFO
G	1-22-99	ADDED DETAIL A
F	11-10-98	REDRAWN / TOLERANCE AND NOTE CHANGES
E	7-17-98	BACKING PLATE THICKNESS 0.062 - 0.100
D	11-1-98	COMBINE L300-06 & L300A42 / R13 / US INC BLOCK
C	3-16-94	CERAMIC NOTED
B	3-11-94	ADDITIONAL DIMENSIONS
A	8-11-93	PRODUCTION RELEASE

REV	DATE	DESCRIPTION OF CHANGE
MATERIAL: SPECIFY		
FINISH: ALL SURFACES 32/ -NO BURRS		
CNC FILE: N/A		
ACAD FILE: L300-01M		
THE INFORMATION ON THIS DRAWING IS PROPRIETARY AND MAY NOT BE USED, COMMUNICATED, OR REPRODUCED WITHOUT WRITTEN PERMISSION		

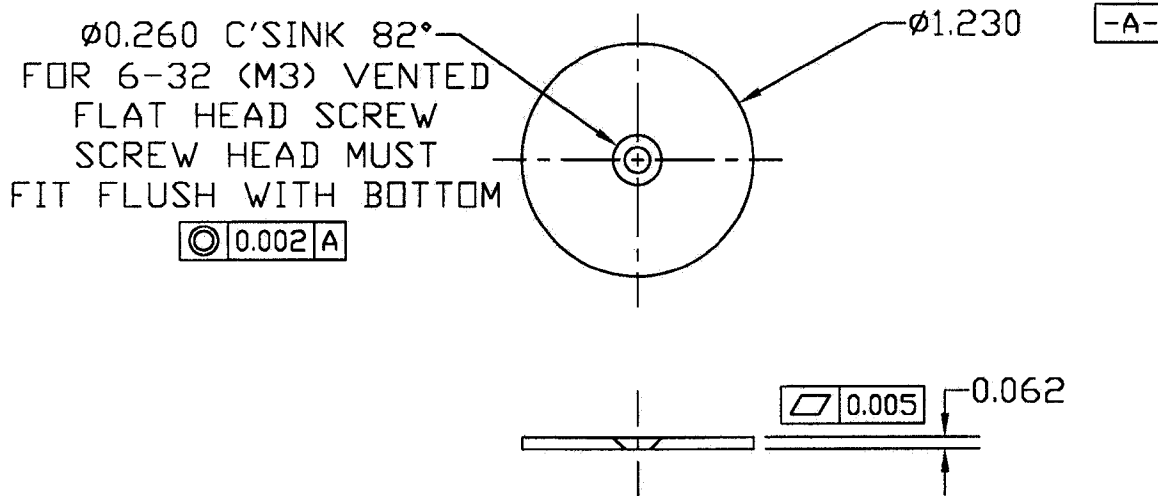
US INCORPORATED

TITLE: 3" MIGHTY MAK
TARGET MOUNTING OPTIONS

SIZE A	TOLERANCES UNLESS NOTED XX .001 XXX .0005 ANGLES 20.5° MAX BREAK EDGE 0.01	DRAWING NUMBER L300-01M	REV H
SCALE: FULL	DWN BY: NWM	DATE: 1-22-99	SHEET: 1 OF 1

3" MIGHTY MAK TARGET KEEPER OPTIONS

USE IF ATTACHING TARGET KEEPER
TO BACKING PLATE* OR DIRECTLY TO TARGET**



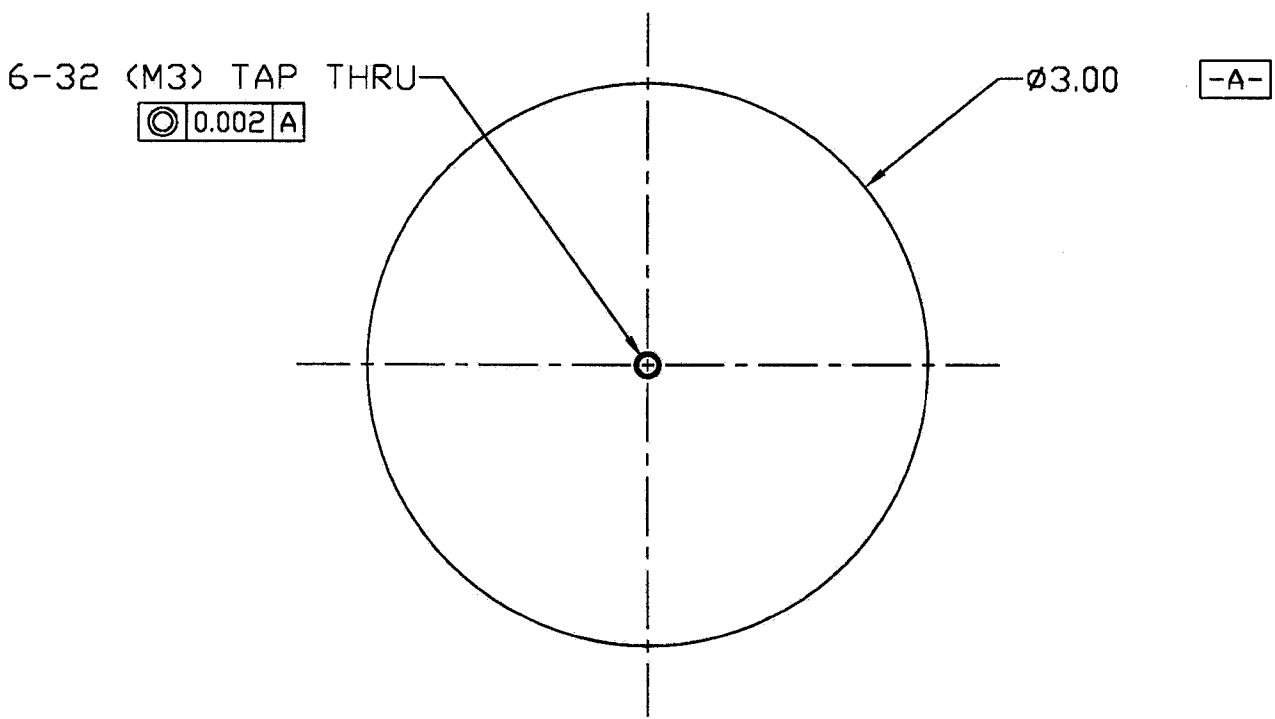
** NOTE: SEE DWG# L300-01M FOR TARGET MOUNTING OPTIONS

REV	DATE	DESCRIPTION OF CHANGE
C	11-10-98	EDIT TEXT
F	11-10-98	REDRAWN / TOLERANCE AND NOTE CHANGES
E	11-1-98	R13 / US INC BLOCK
D	4-10-98	FLATNESS SPEC 0.001-0.005 / C'SINK HOLE SPECS
C	12-8-98	BLOCK CHANGE
B	8-11-93	REDRAWN
A	N/A	PRODUCTION RELEASE

US INCORPORATED			
TITLE: 3" MIGHTY MAK TARGET KEEPER			
SIZE	TOLERANCES UNLESS NOTED	DRAWING NUMBER	REV
A	<small> .XX ±0.005 .XX ±0.005 ANGLES 45° MAX BREAK EDGE 0.01 </small>	L300-02	G
SCALE: FULL	DNV BY: NWM	DATE: 11-10-98	SHEET: 1 OF 1

MATERIAL: 1010-1018 CRS
 FINISH: ALL SURFACES 32/ -NO BURRS
 CNC FILE: N/A
 ACAD FILE: L300-02
 THE INFORMATION ON THIS DRAWING IS PROPRIETARY
 AND MAY NOT BE USED, COMMUNICATED, OR REPRODUCED WITHOUT WRITTEN PERMISSION

3" MIGHTY MAK BACKING PLATE WITH SCREW



L300-02 TARGET KEEPER
(SEE DWG# L300-02 FOR TARGET KEEPER SPECIFICATIONS)

ATTACH TARGET KEEPER TO BACKING PLATE CONCENTRIC TO ± 0.005
USE 6-32 (M3) VENTED FLAT HEAD SCREW
SCREW HEAD MUST BE FLUSH WITH TARGET KEEPER SURFACE

NOTE: CONCENTRICITY IS IMPORTANT IN MAINTAINING MAGNETIC PATH TO TARGET AND CENTERING TARGET ON CATHODE

D	11-10-98	REDRAWN / TOLERANCE AND NOTE CHANGES
C	5-4-98	CHANGED THICKNESS
B	8-11-93	REDRAWN
A	N/A	PRODUCTION RELEASE

US INCORPORATED			
3" MIGHTY MAK BACKING PLATE WITH SCREW			
SIZE	TOLERANCES UNLESS NOTED <small>(IN 300) JCK 45.003 ANGLES 45.5° MAX BREAK EDGE 0.01</small>	DRAWING NUMBER	REV
A		L300-BP	D
SCALE: FULL	DWN BY: NWM	DATE: 11-10-98	SHEET: 1 OF 1

REV	DATE	DESCRIPTION OF CHANGE
MATERIAL: OFHC COPPER		
FINISH: ALL SURFACES 32/ -NO BURRS		
CNC FILE: N/A		
ACAD FILE: L300-BP		
<small>THE INFORMATION ON THIS DRAWING IS PROPRIETARY AND MAY NOT BE USED, COMMUNICATED, OR REPRODUCED WITHOUT WRITTEN PERMISSION</small>		