

FOLLOWING DIMENSIONS FOR ALL MATERIALS,
NON-MACHINEABLE AND MACHINEABLE

*NOTE	MIN	MAX
A NONMAGNETIC	0.040"	0.225"
B MAGNETIC**	0.040"	0.100"

** THICKNESS OF A MAGNETIC TARGET DEPENDS
ON THE PERMEABILITY OF THE MATERIAL

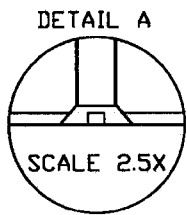
F 7-1-1999 REDRAWN
 E 10-16-96 R13 / US INC BLOCK
 D 8-12-93 MAX THICKNESS
 C 8-25-93 MIN THICKNESS
 B 3-17-93 MAX THICKNESS
 A N/A PRODUCTION RELEASE

REV	DATE	DESCRIPTION OF CHANGE
MATERIAL: SEE NOTE		
FINISH: 64 FINISH - NO BURRS		
CNC FILE: N/A		
ACAD FILE: L130-01G		

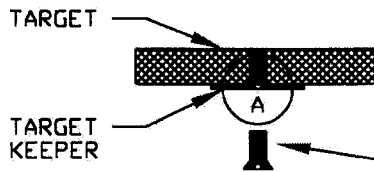
US INCORPORATED			
TITLE: 1.3" MAK TARGET			
SIZE A	TOLERANCES UNLESS NOTED XX ±0.01 XXX ±0.005 ANGLES ±0.5° MAX BREAK EDGE 0.01	DRAWING NUMBER L130-01	REV F
SCALE: 2X	DWN BY: NWM	DATE: 7-1-1999	SHEET: 1 OF 1

1.3" MINIMAK TARGET MOUNTING OPTIONS

TARGET ATTACHED TO TARGET KEEPER WITH SCREW



COUNTERSINK
TARGET AND
KEEPER SO
SCREW HEAD
FITS FLUSH
(STD TAP PROC)

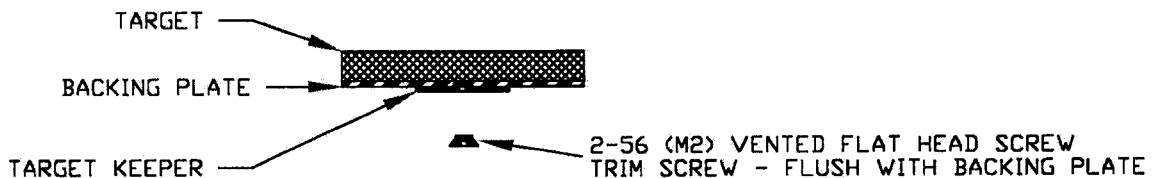


TAPPING INFORMATION FOR TARGETS:
0.080" OR LESS TAP THRU
0.100" OR GREATER TAP 90%

2-56 (M2) VENTED FLAT HEAD SCREW

NOTE: SEE DWG# L130-02 TARGET KEEPER FOR SPECIFICATIONS

TARGET BONDED TO BACKING PLATE WITH ATTACHED KEEPER



BOND TARGET TO BACKING PLATE CONCENTRIC TO ± 0.005
BOND MUST WITHSTAND 220° C MAXIMUM TEMPERATURE

NOTE: SEE DWG# L130-BP BACKING PLATE SPECIFICATIONS

E	11-18-99	REMOVE BOND INFO
D	1-22-99	ADDED DETAIL A
C	11-10-98	REDRAWN / TOLERANCE AND NOTE CHANGES
B	10-18-98	R15 / US INC BLOCK
A	12-8-98	COMBINE L130-01J, L130-01K, L130-01L

REV	DATE	DESCRIPTION OF CHANGE
MATERIAL: SPECIFY		
FINISH: ALL SURFACES 32/ -NO BURRS		
CNC FILE: N/A		
ACAD FILE: L130-01M		
THE INFORMATION ON THIS DRAWING IS PROPRIETARY AND MAY NOT BE USED, COMMUNICATED, OR REPRODUCED WITHOUT WRITTEN PERMISSION		

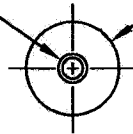
US INCORPORATED			
1.3" MINIMAK TARGET MOUNTING OPTIONS			
SIZE	TOLERANCES UNLESS NOTED	DRAWING NUMBER	REV
A	XX ±0.01 XXX ±0.005 ANGLES 30.5° MAX BREAK EDGE 0.01	L130-01M	E
SCALE: FULL	DWN BY: NWM	DATE: 1-22-99	SHEET: 1 OF 1

1.3" MINIMAK TARGET KEEPER OPTIONS

USE IF ATTACHING TARGET KEEPER
TO BACKING PLATE* OR DIRECTLY TO TARGET**

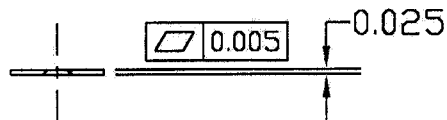
Ø0.155 C'SINK 82°
FOR 2-56 (M2) VENTED
FLAT HEAD SCREW
SCREW HEAD MUST
FIT FLUSH WITH BOTTOM

Ⓞ 0.002 | A



Ø0.500

-A-



** NOTE: SEE DWG# L130-01M FOR TARGET MOUNTING OPTIONS

US INCORPORATED

TITLE: 1.3" MINIMAK TARGET KEEPER

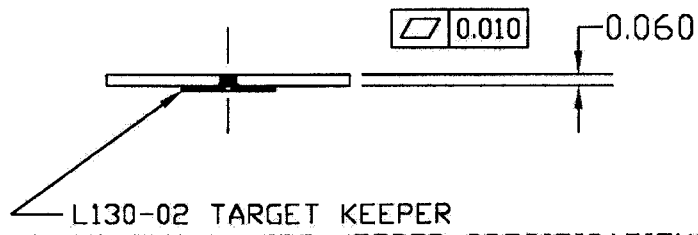
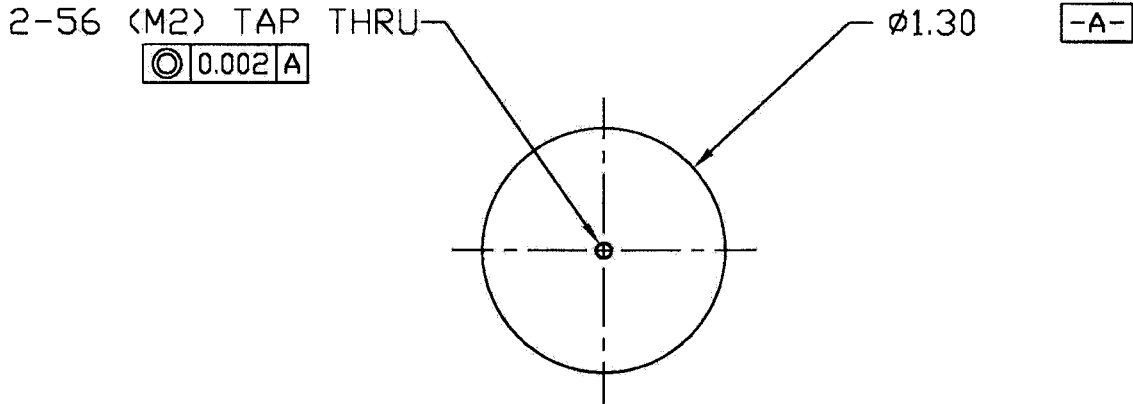
C 11-18-99 edited text
B 11-10-98 REDRAWN / TOLERANCE AND NOTE CHANGES
A N/A PRODUCTION RELEASE

REV DATE DESCRIPTION OF CHANGE
MATERIAL: 1010-1018 CRS
FINISH: ALL SURFACES 32/ -NO BURRS
CNC FILE: N/A
ACAD FILE: L130-02

SIZE A	TOLERANCES UNLESS NOTED XX ±0.01 XXX ±0.005 ANGLES 45° MAX BREAK EDGE 0.01	DRAWING NUMBER L130-02	REV C
SCALE: FULL	DWN BY: NWM	DATE: 11-10-98	SHEET: 1 OF 1

THE INFORMATION ON THIS DRAWING IS PROPRIETARY
AND MAY NOT BE USED, COMMUNICATED, OR REPRODUCED WITHOUT WRITTEN PERMISSION

1.3" MINIMAK BACKING PLATE WITH SCREW



(SEE DWG# L130-02 FOR TARGET KEEPER SPECIFICATIONS)

ATTACH TARGET KEEPER TO BACKING PLATE CONCENTRIC TO ± 0.005
 USE 2-56 (M2) VENTED FLAT HEAD SCREW
 SCREW HEAD MUST BE FLUSH WITH TARGET KEEPER SURFACE

NOTE: CONCENTRICITY IS IMPORTANT IN MAINTAINING MAGNETIC PATH
 TO TARGET AND CENTERING TARGET ON CATHODE

B	11-10-98	NO HOLE REVISION
A	N/A	PRODUCTION RELEASE
REV	DATE	DESCRIPTION OF CHANGE
MATERIAL: OFHC COPPER		
FINISH: ALL SURFACES 32/ -NO BURRS		
CNC FILE: N/A		
ACAD FILE: L130-BP		
THE INFORMATION ON THIS DRAWING IS PROPRIETARY AND MAY NOT BE USED, COMMUNICATED, OR REPRODUCED WITHOUT WRITTEN PERMISSION		

US INCORPORATED			
TITLE: 1.3" MINIMAK BACKING PLATE WITH SCREW			
SIZE	TOLERANCES UNLESS NOTED	DRAWING NUMBER	REV
A	SEE 4001 SEE 4005 ANGLES 45° MAX BREAK EDGE 0.01	L130-BP	B
SCALE: FULL	DWN BY: NWM	DATE: 11-10-98	SHEET: 1 OF 1