

64 FINISH

FOLLOWING DIMENSIONS FOR ALL MATERIALS,  
NON-MACHINEABLE AND MACHINEABLE

*NOTE	MIN	MAX
A NONMAGNETIC	0.062"	0.750"
B MAGNETIC**	0.040"	0.312"

\*\* THICKNESS OF A MAGNETIC TARGET DEPENDS ON THE PERMEABILITY OF THE MATERIAL

# US INCORPORATED

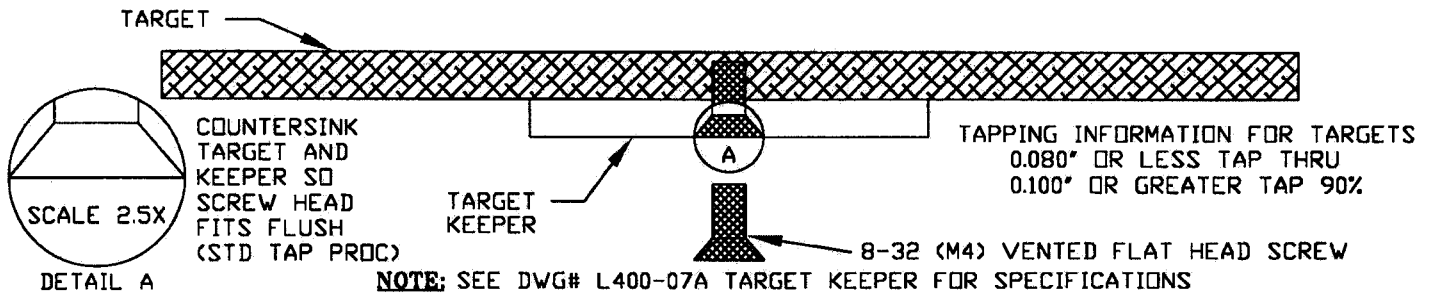
REV	DATE	DESCRIPTION OF CHANGE
		MATERIAL: SEE NOTE ABOVE
		FINISH: SEE NOTE ABOVE
		CNC FILE: N/A
		ACAD FILE: L400-01

TITLE: <b>4" MAK TARGET</b>			
SIZE <b>A</b>	TOLERANCES UNLESS NOTED XX ±0.01 XXX ±0.001 ANGLES ±0.5° MAX BREAK EDGE 0.01	DRAWING NUMBER <b>L400-01</b>	REV
SCALE: FULL	DWN BY: PM	DATE: 2-14-00	SHEET: 1 OF 1

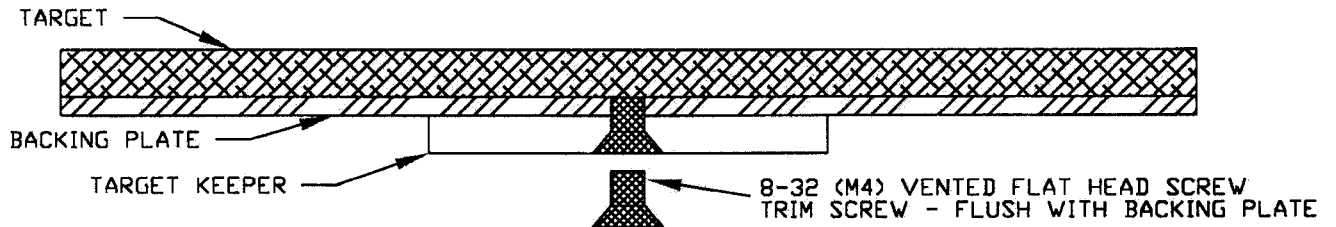
THE INFORMATION ON THIS DRAWING IS PROPRIETARY  
AND MAY NOT BE USED, COMMUNICATED, OR REPRODUCED WITHOUT WRITTEN PERMISSION

# 4" MAK TARGET MOUNTING OPTIONS

## TARGET ATTACHED TO TARGET KEEPER WITH SCREW



## TARGET BONDED TO BACKING PLATE WITH ATTACHED KEEPER



BOND TARGET TO BACKING PLATE CONCENTRIC TO  $\pm 0.005$   
 BOND MUST WITHSTAND 220° C MAXIMUM TEMPERATURE  
 NOTE: SEE DWG# L400-BP BACKING PLATE SPECIFICATIONS

US INCORPORATED

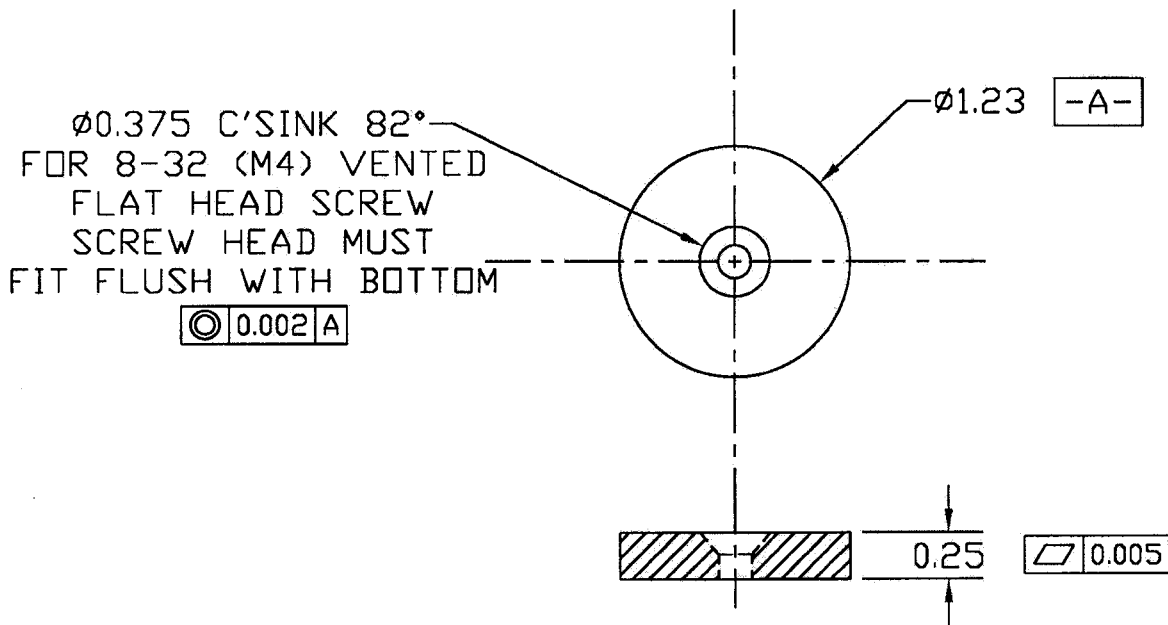
TITLE: 4" MAK  
TARGET MOUNTING OPTIONS

REV	DATE	DESCRIPTION OF CHANGE
A	1-30-02	Remove keeper to target bond option
MATERIAL:		
FINISH:		
CNC FILE: N/A		
ACAD FILE: L400-01M		
THE INFORMATION ON THIS DRAWING IS PROPRIETARY AND MAY NOT BE USED, COMMUNICATED, OR REPRODUCED WITHOUT WRITTEN PERMISSION		

SIZE	TOLERANCES UNLESS NOTED X.XX ±0.01 X.XXX ±0.005 ANGLE ±0.5° MAX BREAK EDGE 0.01	DRAWING NUMBER	REV
A		L400-01M	
SCALE: FULL	DWN BY: TJ	DATE: 1-30-02	SHEET: 1 OF 1

# 4" MAK TARGET KEEPER OPTIONS

USE IF ATTACHING TARGET KEEPER  
TO BACKING PLATE\* OR DIRECTLY TO TARGET\*\*



**\*\* NOTE:** SEE DWG# L400-01M FOR TARGET MOUNTING OPTIONS

A	2-14-00	SOLID KEEPER
REV	DATE	DESCRIPTION OF CHANGE
MATERIAL: 440C STAINLESS STEEL		
FINISH: NO BURRS - 32 FINISH		
CNC FILE: N/A		
ACAD FILE: L400-02A		
<small>THE INFORMATION ON THIS DRAWING IS PROPRIETARY AND MAY NOT BE USED, COMMUNICATED, OR REPRODUCED WITHOUT WRITTEN PERMISSION</small>		

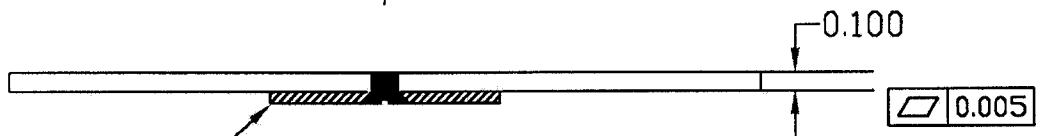
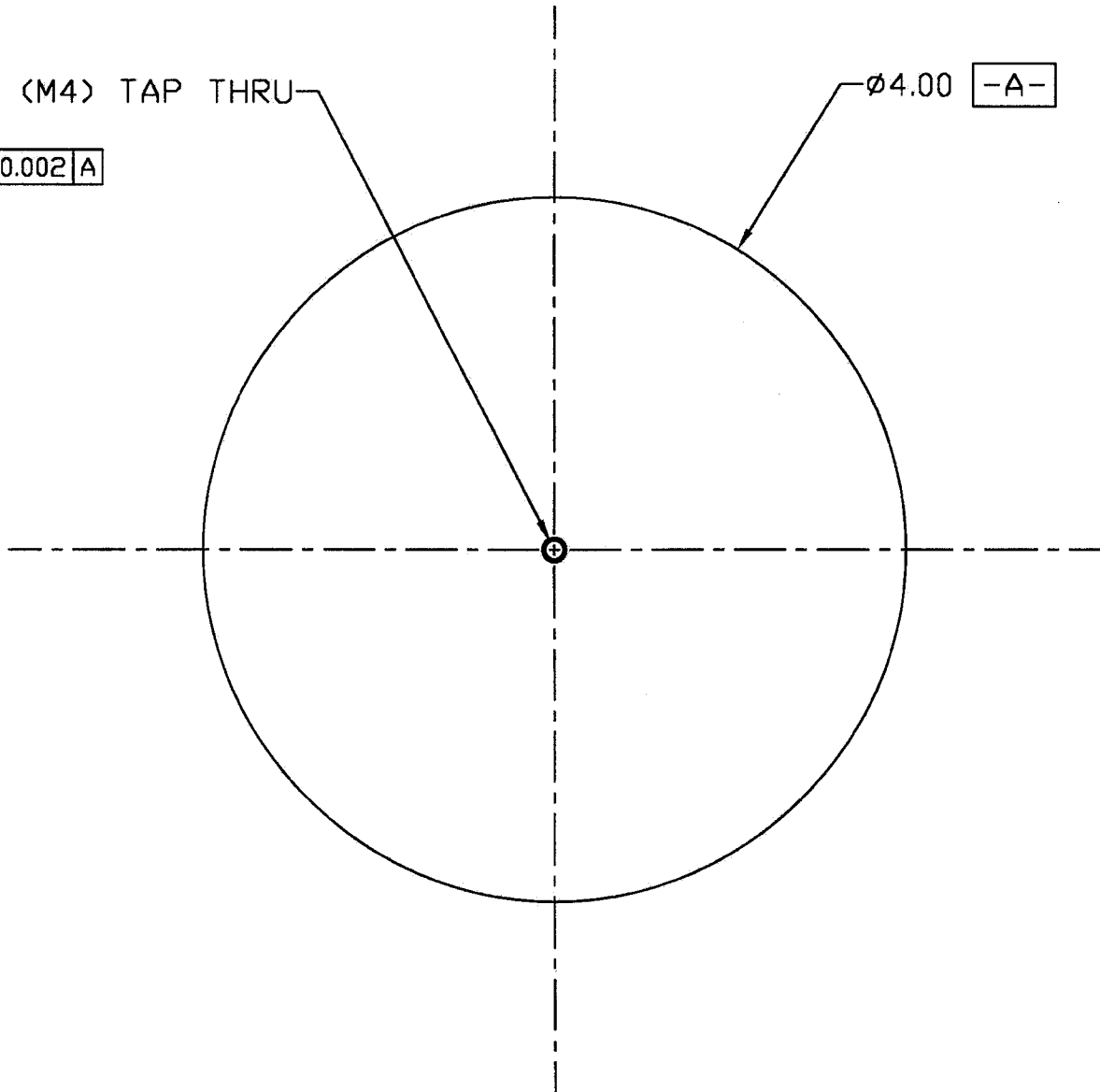
<b>US INCORPORATED</b>			
TITLE: <b>4" MAK TARGET KEEPER</b>			
SIZE	TOLERANCES UNLESS NOTED	DRAWING NUMBER	REV
A	<small>XX ±0.01 XXX ±0.001 ANGLES 25.5° MAX BREAK EDGE 0.01</small>	<b>L400-07A</b>	A
SCALE: FULL	DWN BY: NWM	DATE: 7-23-99	SHEET: 1 OF 1

# 4" MAK BACKING PLATE WITH SCREW

8-32 (M4) TAP THRU

⊙ 0.002 | A

∅4.00 -A-



L400-07A TARGET KEEPER

(SEE DWG# L400-07A FOR TARGET KEEPER SPECIFICATIONS)

ATTACH TARGET KEEPER TO BACKING PLATE CONCENTRIC TO  $\pm 0.005$

USE 8-32 (M4) VENTED FLAT HEAD SCREW

SCREW HEAD MUST BE FLUSH WITH TARGET KEEPER SURFACE

**NOTE:** CONCENTRICITY IS IMPORTANT IN MAINTAINING MAGNETIC PATH TO TARGET AND CENTERING TARGET ON CATHODE

US INCORPORATED

4" MAK BACKING PLATE

REV	DATE	DESCRIPTION OF CHANGE
N/A		PRODUCTION RELEASE
		MATERIAL: OFHC COPPER
		FINISH: NO BURRS - 32 FINISH
		CNC FILE: N/A
		ACAD FILE: L400-BP

SIZE	TOLERANCES UNLESS NOTED	DRAWING NUMBER	REV
A	<small>                     .25 ±0.01                      .125 ±0.005                      ANGLES 90.3°                      MAX BREAK EDGE 0.01                 </small>	L400-BP	
SCALE:	FULL	DWN BY: PM	DATE: 2-14-00 SHEET: 1 OF 1

THE INFORMATION ON THIS DRAWING IS PROPRIETARY AND MAY NOT BE USED, COMMUNICATED, OR REPRODUCED WITHOUT WRITTEN PERMISSION