

64 FINISH

FOLLOWING DIMENSIONS FOR ALL MATERIALS,  
NON-MACHINEABLE AND MACHINEABLE

*NOTE	MIN	MAX
A NONMAGNETIC	0.125"	1.000"
B MAGNETIC**	0.062"	0.375"

\*\* THICKNESS OF A MAGNETIC TARGET DEPENDS ON THE PERMEABILITY OF THE MATERIAL

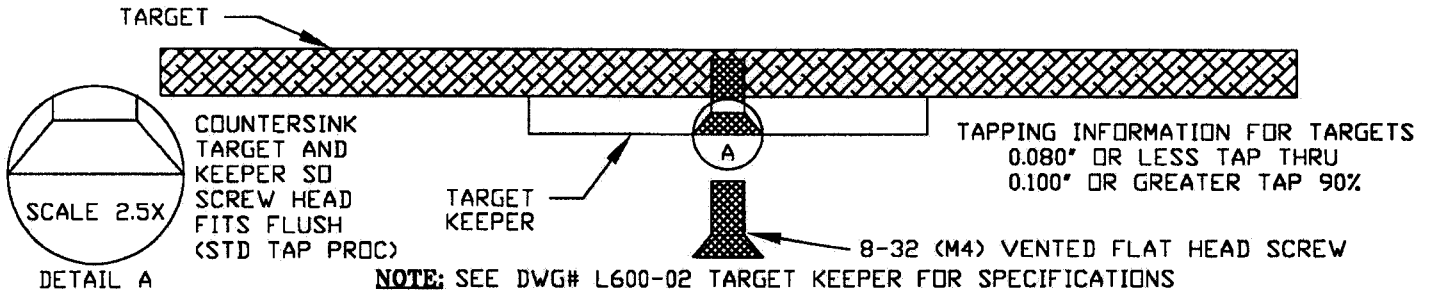
B	3-22-99	UPDATE TOLERANCES
A	N/A	FIRST DRAWN
REV	DATE	DESCRIPTION OF CHANGE
MATERIAL: SEE NOTE ABOVE		
FINISH: SEE NOTE ABOVE		
CNC FILE: N/A		
ACAD FILE: L600-01		

<b>US INCORPORATED</b>			
TITLE: <b>6" MAK TARGET</b>			
SIZE	TOLERANCES UNLESS NOTED	DRAWING NUMBER	REV
<b>A</b>	<small>           .015" .001            .030" .005            ANGLES .05"            MAX BREAK EDGE .01         </small>	<b>L600-01</b>	<b>B</b>
SCALE: FULL	DWN BY: NWM	DATE: 3-22-99	SHEET: 1 OF 1

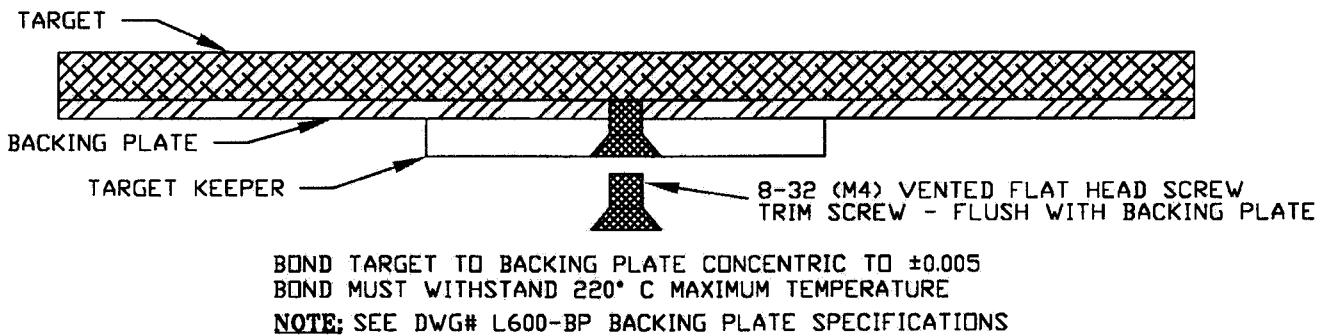
THE INFORMATION ON THIS DRAWING IS PROPRIETARY  
AND MAY NOT BE USED, COMMUNICATED, OR REPRODUCED WITHOUT WRITTEN PERMISSION

# 6" MAK TARGET MOUNTING OPTIONS

## TARGET ATTACHED TO TARGET KEEPER WITH SCREW



## TARGET BONDED TO BACKING PLATE WITH ATTACHED KEEPER



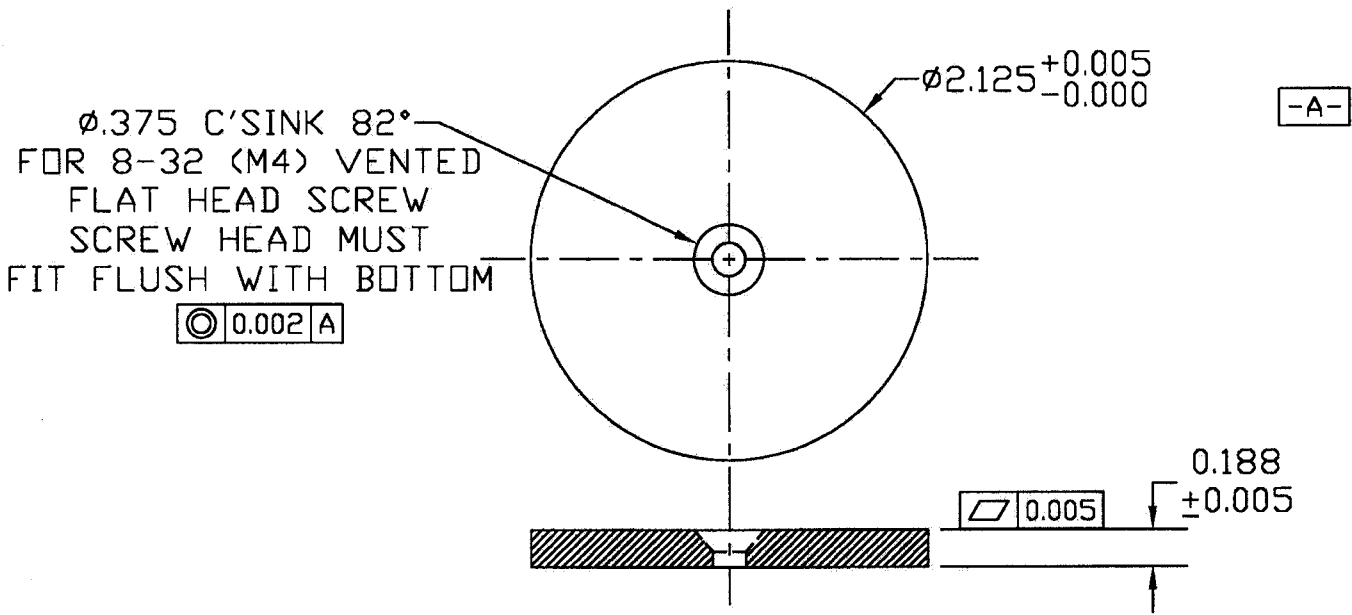
E	3-22-99	KEEPER OD 1.250 - 2.130 / ADD BONDING NOTES
D	7-22-97	KEEPER OD 2.355 - 1.230
C	7-21-97	KEEPER THICKNESS 0.063 - 0.125
B	11-7-96	RIS / US INC BLOCK
A	N/A	PRODUCTION RELEASE
REV	DATE	DESCRIPTION OF CHANGE

MATERIAL: SPECIFY	
FINISH: ALL SURFACES 32/ -NO BURRS	
CNC FILE: N/A	
ACAD FILE: L600-01M	
THE INFORMATION ON THIS DRAWING IS PROPRIETARY AND MAY NOT BE USED, COMMUNICATED, OR REPRODUCED WITHOUT WRITTEN PERMISSION	

US INCORPORATED			
TITLE: 6" MAK			
TARGET MOUNTING OPTIONS			
SIZE	TOLERANCES UNLESS NOTED	DRAWING NUMBER	REV
A	.XX ±0.01 .XXX ±0.005 ANGLES ±0.5° MAX BREAK EDGE 0.21	L600-01M	E
SCALE: FULL	DVN BY: NWM	DATE: 3-22-99	SHEET: 1 OF 1

# 6" MAK TARGET KEEPER OPTIONS

USE IF ATTACHING TARGET KEEPER  
TO BACKING PLATE\* OR DIRECTLY TO TARGET\*\*



\*\* NOTE: SEE DWG# L600-01M FOR TARGET MOUNTING OPTIONS

H	8-22-00	REDUCE DIAMETER FOR STANDARD STOCK
G	3-22-99	COMBINE 2 PARTS INTO 1 PC / OD 2.115 - 2.130
F	7-10-98	THICKNESS 0.240 - 0.200
E	1-8-98	OD 2.360 - 2.115 / THICKNESS 0.140 - 0.240
D	12-1-97	THICKNESS 0.170 - 0.140
C	11-26-97	THICKNESS 0.115 - 0.170 / KEEPER OD 0.750 - 1.000
B	7-22-97	OD 2.355 - 1.230
A	7-21-97	FIRST DRAWN

<b>US INCORPORATED</b>			
<b>6" MAK TARGET KEEPER</b>			
SIZE	TOLERANCES UNLESS NOTED	DRAWING NUMBER	REV
<b>A</b>	<small>           BY 21.01            JCR 25.005            ANGLES 20.5°            MAX BREAK EDGE 0.01         </small>	<b>L600-02</b>	<b>H</b>
SCALE:	FULL	DWN BY: NWM	DATE: 3-22-99 SHEET: 1 OF 1

REV DATE DESCRIPTION OF CHANGE  
 MATERIAL: 1018 MILD STEEL  
 FINISH: NO BURRS - 32 FINISH  
 CNC FILE: L600-02  
 ACAD FILE: L600-02  
 THE INFORMATION ON THIS DRAWING IS PROPRIETARY  
 AND MAY NOT BE USED, COMMUNICATED, OR REPRODUCED WITHOUT WRITTEN PERMISSION

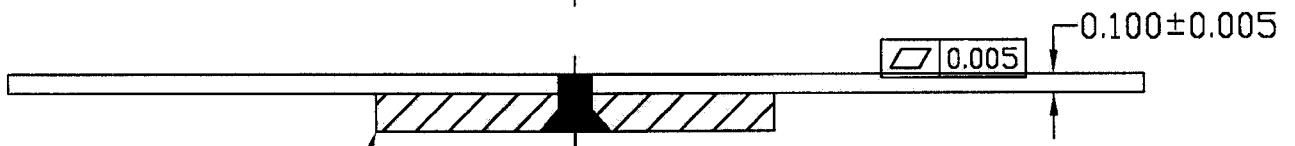
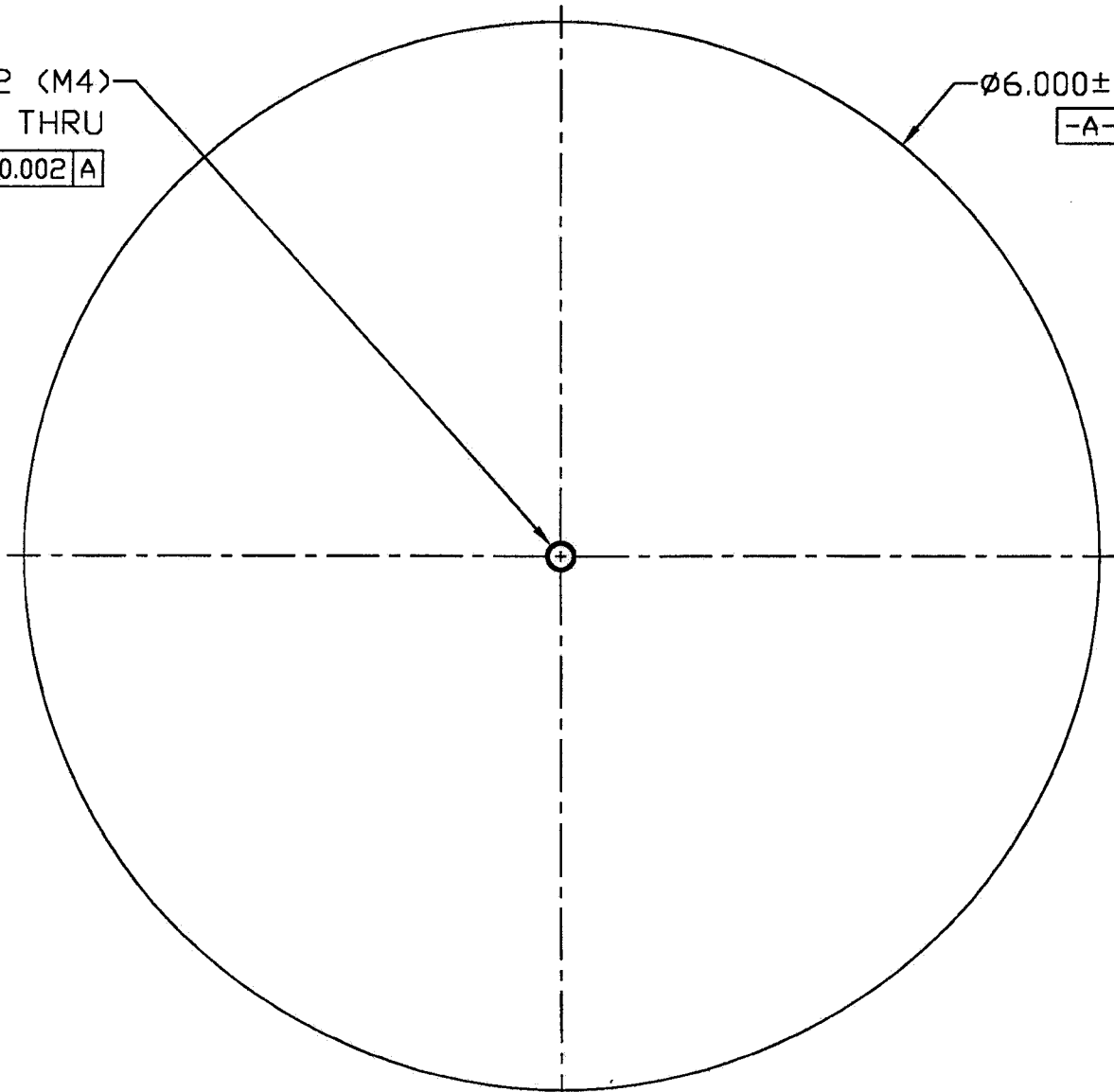
# 6" MAK BACKING PLATE WITH SCREW

8-32 (M4)  
TAP THRU

$\text{◎} 0.002 \text{ A}$

$\text{Ø} 6.000 \pm 0.010$

-A-



L600-02 TARGET KEEPER

(SEE DWG# L600-02 FOR TARGET KEEPER SPECIFICATIONS)

ATTACH TARGET KEEPER TO BACKING PLATE CONCENTRIC TO  $\pm 0.005$

USE 8-32 (M4) VENTED FLAT HEAD SCREW

SCREW HEAD MUST BE FLUSH WITH TARGET KEEPER SURFACE

**NOTE:** CONCENTRICITY IS IMPORTANT IN MAINTAINING MAGNETIC PATH TO TARGET AND CENTERING TARGET ON CATHODE

US INCORPORATED

B 3-22-99 REDRAWN / TOLERANCE AND NOTE CHANGES  
A N/A PRODUCTION RELEASE

REV	DATE	DESCRIPTION OF CHANGE
B	3-22-99	REDRAWN / TOLERANCE AND NOTE CHANGES
A	N/A	PRODUCTION RELEASE

MATERIAL: OFHC COPPER  
FINISH: NO BURRS - 32 FINISH  
CNC FILE: N/A  
ACAD FILE: L600-BP

TITLE: 6" MAK  
BACKING PLATE WITH SCREW

SIZE	TOLERANCES UNLESS NOTED	DRAWING NUMBER	REV
A	SEE 20.01 DIM $\pm 0.005$ ANGLES $\pm 0.5^\circ$ MAX BREAK EDGE 0.01	L600-BP	B
SCALE:	FULL	DWN BY: NWM	DATE: 3-22-99 SHEET: 1 OF 1

THE INFORMATION ON THIS DRAWING IS PROPRIETARY AND MAY NOT BE USED, COMMUNICATED, OR REPRODUCED WITHOUT WRITTEN PERMISSION